

LIMITED WARRANTY STATEMENT

This Warranty does not apply to defects or damages to Products caused by human error-related factors or any other non-ordinary factors, including but not limited to:

- Malfunctions or damages caused by force majeure such as natural calamity or any inappropriate use by any person.
- Product has been repaired or taken apart by unauthorized technicians.
- Warranty label is altered, damaged or missing.
- Product serial number does not conform to EVM records, or is difficult to ascertain.





The following conditions are exempt from coverage under the product warranty :

RAM Memory modules
 USB Flash Drive
 Flash memory cards
 SSD-Solid State Drives
 Motherboards
 Mobile Accessories-Power Banks, USB Cables and Chargers

LIMITED WARRANTY STATEMENT

MODULE

Warranty Label Issue

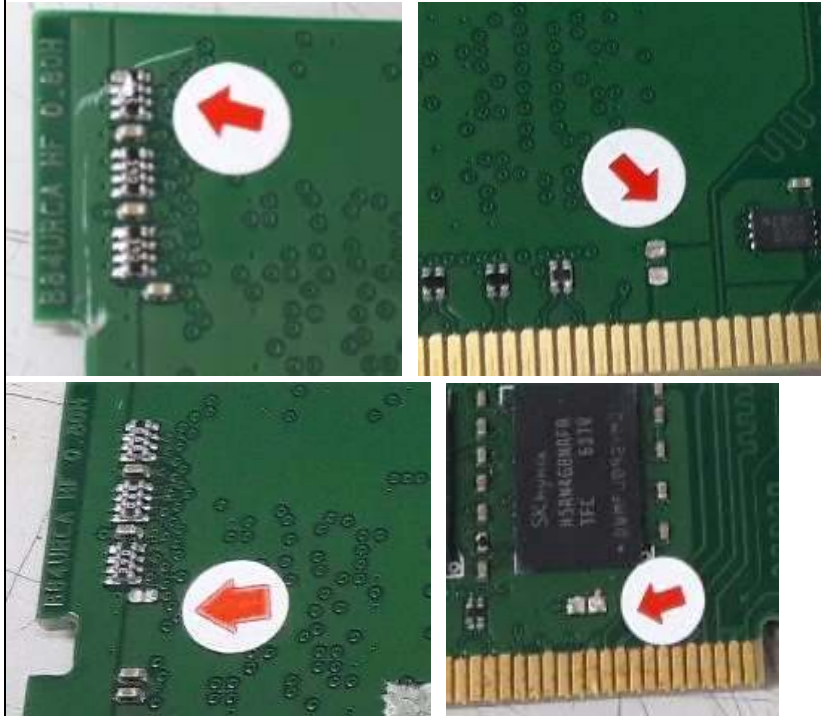
Alteration, removal and illegible of the type or unreadable serial number of the Product./ Product serial number does not conform to EVM records, or is difficult to ascertain	
Label tilted or seems to have been altered.	
EVM warranty label missing	
Not EVM product ; Warranty label doesn't match with actual product	

LIMITED WARRANTY STATEMENT

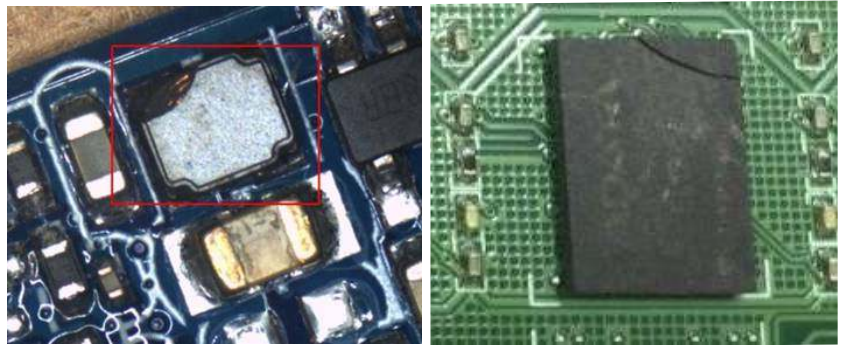
MODULE

Customer induced damaged : part (s)

Customer induced damaged:
Parts Missing or/and damaged,
such as capacitor.



Component/IC broken



Component Shedding or missing IC



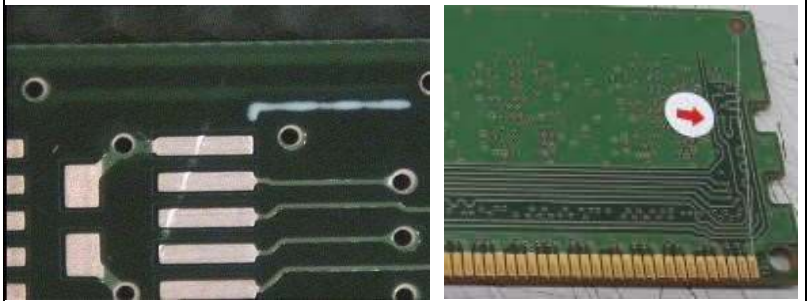
LIMITED WARRANTY STATEMENT MODULE

Customer induced damaged : PCB

Board edge delaminated
Improper pre-installation and transport and/or stress caused by dropping, stepping on, or otherwise mishandling the module during installation.



PCB board damaged or scratched



PCB Bending



PCB Broken

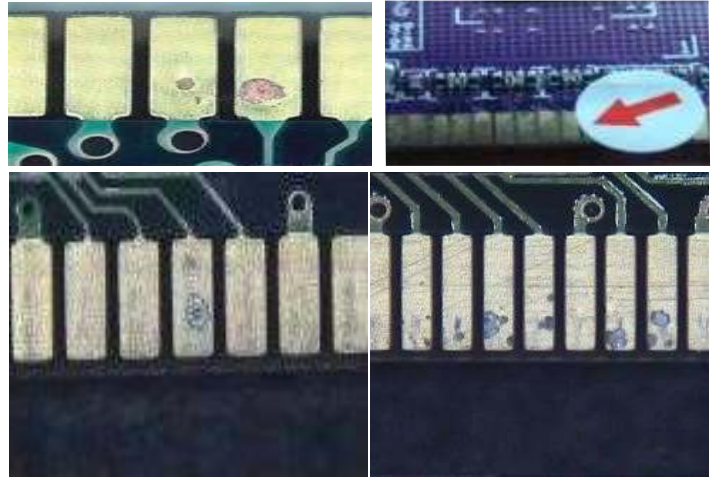


LIMITED WARRANTY STATEMENT

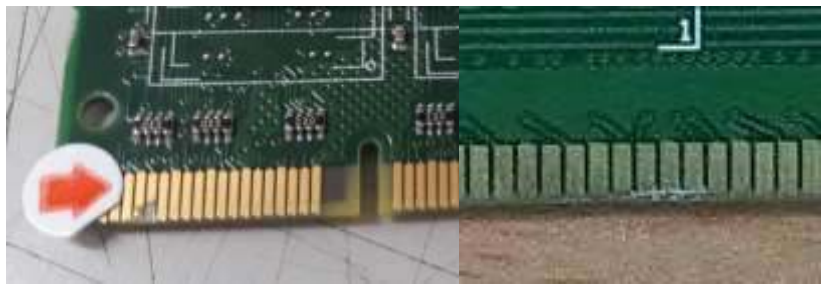
MODULE

Customer induced damaged: Connector (golden finger)

Connector erosion due to humidity or exposure to environment beyond product specifications.



Deep connector scratches
Connector scratching / corrosion



Connector burning
(possibly accompanied by PCB overheating).



Connector scratched and corrosive



Repair of or modifications to the EVM Modules not approved, authorized, or performed by EVM.



USB Flash Drive

The USB connector is bend or deformed.



Damaged and scratched on the connector or/and SN number and capacity are unrecognizable.



USB connector cracked or broken.



Housing cracked and internal parts missing



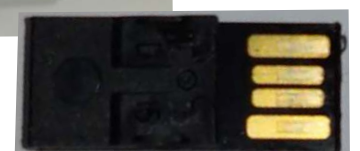
Not EVM product
- inner parts are not EVM
- Not EVM SN



Repair of or modifications to the EVM Flash Drive not approved, authorized, or performed by EVM.

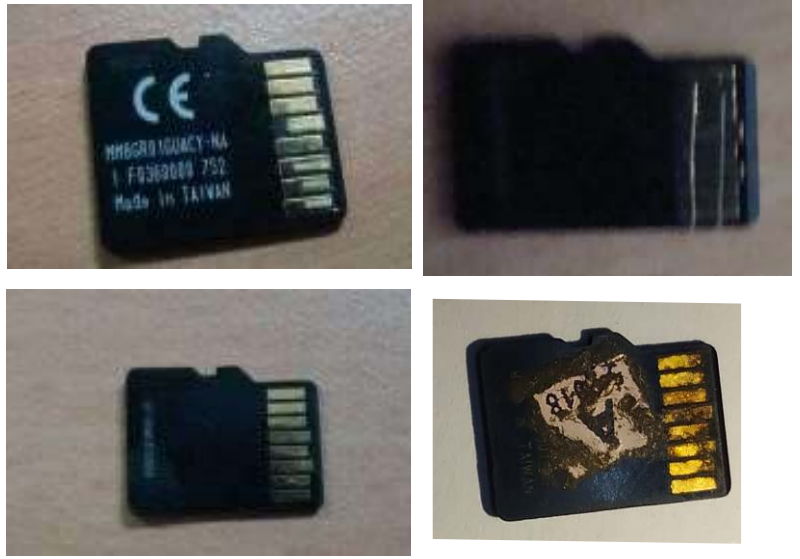


The housing and product are detached caused by dropping, stepping on, or otherwise mishandling the product during installation.

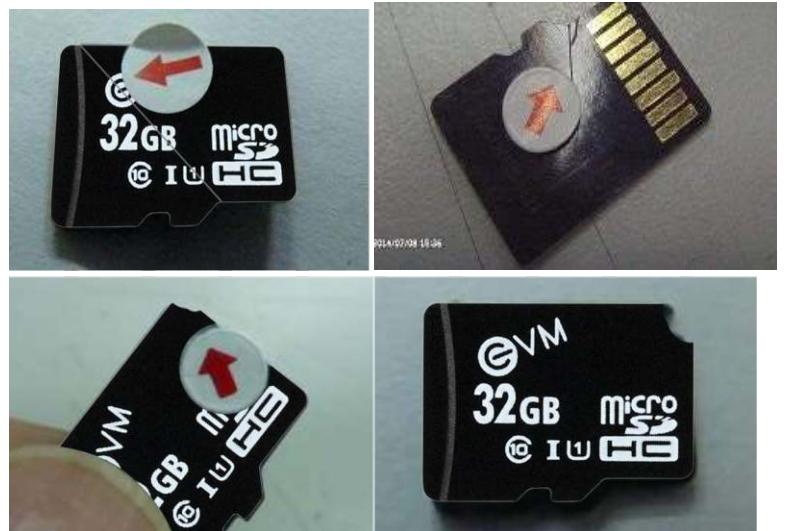


Micro SD CARD

Connector damaged:
Cracked or bending /golden finger
oxidized / scratched on golden fingers.



Cracked, chipping or damage
on the card



Damage derived from unintended use:
severe casing abrasion, exposure of
components.



Not EVM Product /
Unrecognized as EVM product /
The wording on the product doesn't
match with the actual product



SSD – SOLID STATE DRIVES

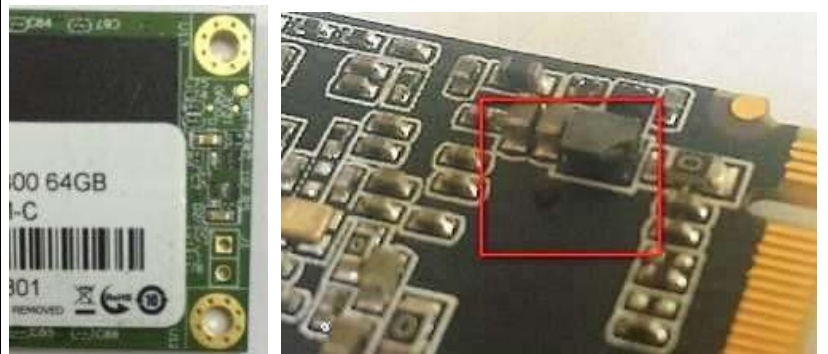
Out of warranty
(according to the warranty label)/
Product serial number does not conform
to EVM records, or is difficult to ascertain.



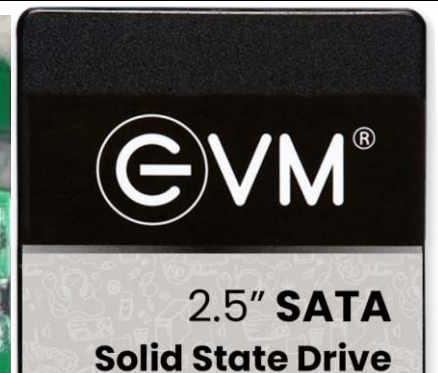
Physical damage on the housing /
Housing has
concave or convex mark.



Parts missing or damaged.

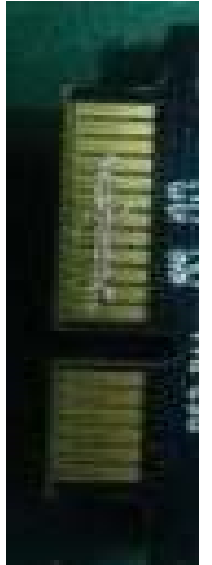


Repair of or modifications to the
EVM SSD not approved, authorized,
or performed by EVM.



SSD – SOLID STATE DRIVES

Human Induced connector damage



Component has been altered /
Repair of or modifications to the
EVM SSDs not approved, authorized,
or performed by EVM.



Physical damage caused by dropping.



SSD – SOLID STATE DRIVES

Components Burnt or damaged

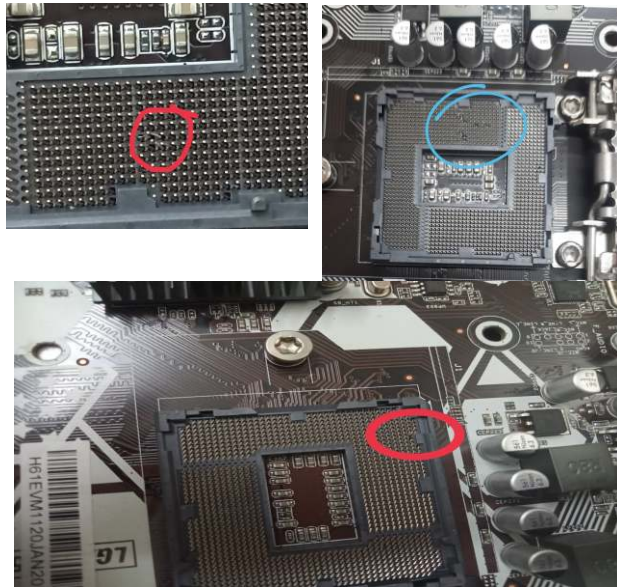


Sticker Removed

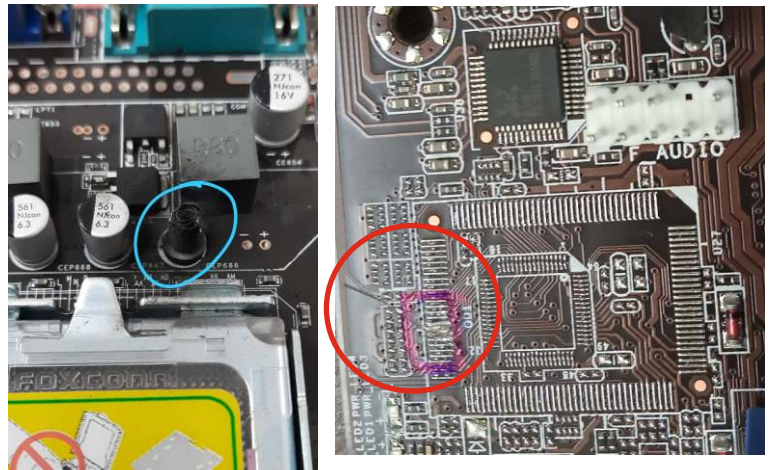


MotherBoard

CPU Socket pin damaged



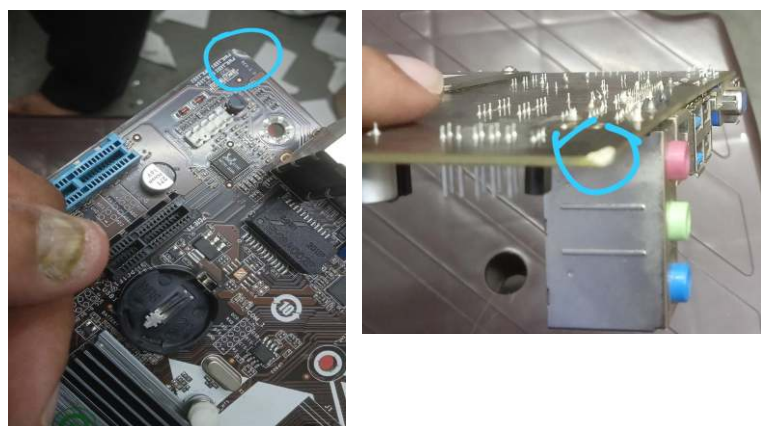
Other parts damaged



MotherBoard parts
Corrosive/Rusted



Motherboard Corner Edges
bend



POWER BANK

Out of warranty
(according to the warranty label)/
Product serial number does not conform to
EVM records, or is difficult to ascertain.



Warranty label missing



Housing has been detached .



USB port damaged



Parts missing from products



Charging Cables

Customer induced damaged–
cracked / bending
Micro USB, Type-C and Lightning cable



Customer induced damage on the cable



Connector missing
Micro USB, Type-C and Lightning cable